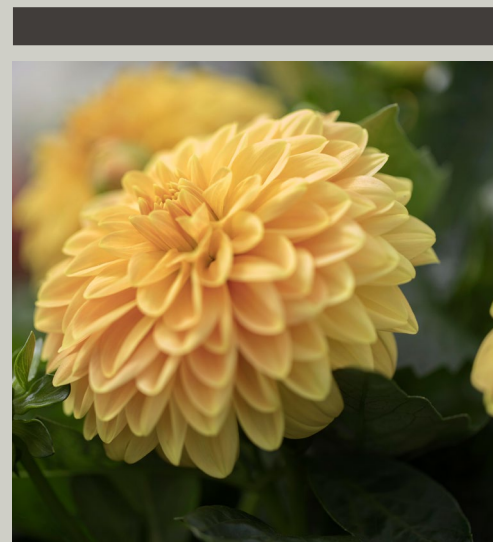


Queen[®] Maya Dahlia[™]

At Queen[®] we are setting new quality standards for Dahlia breeding, focusing on the following selection criteria:

- Large, luxurious flowers in vibrant long-lasting colors.
- Healthy vigorous varieties with short production time – offering optimal use of the production area in the peak season
- Cultivation with reduced need for chemical growth regulation, leading to improved keeping quality.
- Well documented high level of ethylene resistance – ensuring optimal transport and sales performance.
- High resistance to mildew.
- Well documented longevity and ornamental value.
- Optimal plant quality, throughout the season, including early spring and late autumn.



Queen® Maya Dahlia™



Blancita

-	-	13 · 5"	21 · 8"
---	---	---------	---------



Raquel

-	-	13 · 5"	21 · 8"
---	---	---------	---------



Angelina

-	-	13 · 5"	21 · 8"
---	---	---------	---------



Chloe

-	-	13 · 5"	21 · 8"
---	---	---------	---------



Carmencita

-	-	13 · 5"	21 · 8"
---	---	---------	---------



Elina

-	-	13 · 5"	21 · 8"
---	---	---------	---------



Isobella

-	-	13 · 5"	21 · 8"
---	---	---------	---------



Lisandra

-	-	13 · 5"	21 · 8"
---	---	---------	---------



Xenia

-	-	13 · 5"	21 · 8"
---	---	---------	---------



Sofia

-	-	13 · 5"	21 · 8"
---	---	---------	---------